

# Solution Park Support for Universal Diagramming

# Contents

<b>All the Solutions in Review .....</b>	<b>5</b>
What is it? .....	5
Universal Diagramming Area .....	5
ConceptDraw PRO and ConceptDraw Solution Park .....	5
Basic Diagramming .....	6
Engineering .....	6
Software Development .....	6
Building Plans .....	6
Maps .....	6
Education .....	7
Illustration .....	7
Idea Communication .....	7
 <b>CS Odessa's Role .....</b>	 <b>8</b>
 <b>Basic Diagramming .....</b>	 <b>9</b>
Benefits .....	9
Objective .....	9
Solution Purpose .....	9
Intended For .....	9
Products and methods .....	9
Solution Reference: Basic Diagramming .....	10
Toolbox 1. Basic diagrams .....	10
 <b>Engineering .....</b>	 <b>12</b>
Benefits .....	12
Objective .....	12
Solution Purpose .....	12
Intended For .....	12
Products and methods .....	12
Solution Reference: Engineering .....	13
Toolbox 1. Electronics and electrical engineering diagrams and schematics .....	13
Toolbox 2. Chemical and process engineering diagrams .....	14
Toolbox 3. Mechanical engineering drawings and schematics .....	14
 <b>Software Development .....</b>	 <b>15</b>
Benefits .....	15
Objective .....	15
Solution Purpose .....	15
Intended For .....	15
Products and methods .....	15

Solution Reference: Software Development.....	16
Toolbox 1. UML Diagrams .....	16
Toolbox 2. Sketch User Interface .....	16
<b>Building Plans.....</b>	<b>17</b>
Benefits .....	17
Objective .....	17
Solution Purpose .....	17
Intended For.....	17
Products and methods .....	17
Solution Reference: Building Plans .....	18
Toolbox 1. Building Plans .....	18
<b>Maps.....</b>	<b>20</b>
Benefits .....	20
Objective .....	20
Solution Purpose .....	20
Intended For .....	20
Products and methods .....	20
Solution Reference: Maps .....	21
Toolbox 1. Continent Maps.....	21
Toolbox 2. Directional, Road and Transit Map.....	22
<b>Education .....</b>	<b>23</b>
Benefits .....	23
Objective .....	23
Solution Purpose .....	23
Intended For .....	23
Products and methods .....	23
Solution Reference: Education.....	24
Toolbox 1. Educational Illustrations .....	24
Toolbox 2. Sentence Diagrams .....	25
Toolbox 3. Educational Mind Maps.....	25
<b>Illustration .....</b>	<b>26</b>
Benefits .....	26
Solution Purpose .....	26
Intended For.....	26
Products and methods .....	26
Solution Reference: Illustration .....	27
Toolbox 1. Vector Clip Art .....	27
Toolbox 2. Designing documents, presentations, and web pages .....	28

<b>Idea Communication .....</b>	<b>30</b>
Benefits .....	30
Objective .....	30
Solution Purpose .....	30
Intended For .....	30
Products and methods .....	30
Solution Reference: Idea Communication.....	31
Toolbox 1. Idea Mind Mapping .....	31

## All the Solutions in Review

### What is it?

In ConceptDraw Solution Park there are many time saving solutions that support various professional workplace areas. The solutions in each workplace area contain many drawing and drafting tools that provide knowledge workers with the proper tools to aid with daily tasks.

When you need a comprehensive drawing and drafting tool to illustrate ideas or diagram; ConceptDraw PRO provides you with the ability to deliver professional results. In ConceptDraw PRO there are many tools to assist you with all of your diagramming needs.

### Universal Diagramming Area

In the Universal Diagramming Area we have collected templates, libraries and objects of most often used drawings, here you can find much of what you need for your illustrations. ConceptDraw PRO contains more than 20,000 objects in 100 libraries; these huge libraries will help illustrate what you mean.

The solutions found in the Universal Drawing Area of ConceptDraw Solution Park can be used for generating basic drawings, charts, geographical maps, building plans, wiring and network diagrams, communications, education, engineering, and software prototyping.

### ConceptDraw PRO and ConceptDraw Solution Park

If you are looking for professional diagramming solutions and an integrated approach for your illustrations, look in ConceptDraw Solution Park. The ConceptDraw Solution Park contains additional support of specialized tasks when using ConceptDraw PRO. ConceptDraw Solution Park delivers comprehensive support for professionals by providing separate areas of solutions that can be downloaded with a single click. These professional solutions are engineered to make quick work of complex tasks and jobs. The additional professional solutions include integrated software drawing tools, templates, libraries and objects. The number of supported work areas in ConceptDraw Solution Park is growing rapidly.

## Basic Diagramming

Draw flowcharts, block diagrams, histograms, pie charts, divided bar diagrams, line graphs, circular arrows diagrams, Venn diagrams, bubble diagrams, and concept maps, plus more can be generated with ease.

## Engineering

ConceptDraw PRO helps to visualize industrial systems in electronic, electrical, chemical, process, and mechanical engineering. Draw electrical schematics, digital and analog logic, circuit and wiring schematics and diagrams; power systems diagrams; maintenance and repair diagrams for electronics and electrical engineering; block flow and process flow diagrams, piping and instrumentation diagrams for chemical and process engineering; part, assembly, pneumatic, and hydraulic systems drawings for mechanical engineering.

## Software Development

Helps to accelerate and simplify software development and design by allowing you to draw UML diagrams and prototype Windows and Mac OS user interfaces.

## Building Plans

Building plan tools help architects and building engineers. With ConceptDraw PRO, you have the ability to develop design proposals, communicate ideas and concepts that relate to a design, communicate requirements to a building contractor, record completed work, and make a record of what currently exists. With ConceptDraw PRO you can draw floor plans, site plans, plans of building services, fire and emergency plans, and furniture and equipment layouts.

## Maps

Draw continent, directional, road, and transit maps to represent international, business, and professional information visually. Reflect the geographic distribution of activity and resources, show the transportation and migration ways, navigate in the cities and towns, sites and areas, find route of travel by car or public transport.

## Education

Illustrate educational documents, presentations, and websites quickly and easy with the astronomy, chemistry, math, and physics vector pictures and clip art.

## Illustration

Make professional-looking documents, presentations and websites illustrated with color scalable vector clip art and shapes.

## Idea Communication

Everyone in company is using the same symbols on the maps. It saves time on communication and understanding.

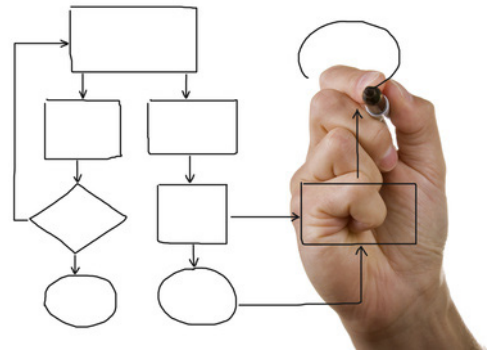
## CS Odessa's Role

Over the past decade we have developed an impressive arsenal of diagramming and drawing tools. People can visually communicate in various areas using our Universal Diagramming solutions available in ConceptDraw Solution Park.

We have brought together our expertise in drawing to assist you to visually describe what you are thinking.

Our drawing and diagramming tool set is second to none; our expertise provides you with the ability to produce professional results. We have over a decade of experience building world-class diagramming tools and supporting our customers who use them.

People use diagrams and drawings in different business and personal activities, including illustrating of paper and electronic documents, and presentations for proposals, drawing of geographical maps, road and city maps, location schematics for data base design, drawing of building and floor plans, site plans, and landscape design for clients, drawing of computer and networks diagrams for documentation, drawing of software and system engineering diagrams for illustration, drawing of industrial engineering diagrams and schematics for documentation.





## Basic Diagramming

### Benefits

Flowcharts, block diagrams, histograms, pie charts, divided bar diagrams, line graphs, circular arrows diagrams, Venn diagrams, bubble diagrams and concept maps, plus more can be generated with ease.



### Objective

Visually communicate business and personal ideas and concepts, general structures and activities.

### Solution Purpose

Draw basic diagrams quickly and easily.

### Intended For

Anyone who needs to draw a basic diagram.

### Products and methods

ConceptDraw PRO is a powerful intelligent vector graphics engine that can be used for basic diagramming.



## Solution Reference: Basic Diagramming

### Toolbox 1. Basic diagrams

Draw flowcharts, block diagrams, histograms, pie charts, divided bar diagrams, line graphs, circular arrows diagrams, Venn diagrams, bubble diagrams, concept maps for the visualizing of business information.

Tasks	Actions	Products
Flowchart	In ConceptDraw PRO, use the template "Basic Flowchart" (Basic Flowchart.cdt)	PRO
2D Block Diagram	In ConceptDraw PRO, use the template "Blocks 2D" (Blocks 2D.cdt)	PRO
3D Block Diagram	In ConceptDraw PRO, use the template "Blocks 3D" (Blocks 3D.cdt)	PRO
Block Diagram with Perspective	In ConceptDraw PRO, use the template "Blocks with Perspective" (Blocks with Perspective.cdt)	PRO
Histograms	In ConceptDraw PRO, use the shape library "Histograms" (Histograms.cdl)	PRO
Pie Charts	In ConceptDraw PRO, use the shape library "Pie Chart" (Pie Charts.cdl)	PRO
Divided Bar Charts	In ConceptDraw PRO, use the shapes "Divided bar 1" and "Divided bar 2" from the library "Charts" (Charts.cdl)	PRO
Line Graphs	In ConceptDraw PRO, use the shapes "Line Graph (Text -> Height)" and "Line Graph (Height -> Text)" from the library "Charts" (Charts.cdl)	PRO

Tasks	Actions	Products
Circular Arrows Diagram	In ConceptDraw PRO, use the shape "Circular arrows" from the library "Marketing Diagrams" (Marketing Diagrams.cdl)	PRO
Venn Diagram	In ConceptDraw PRO, use the template "Venn Diagram" (Venn Diagram.cdt)	PRO
Bubble Diagram	In ConceptDraw PRO, use the template "Bubble Diagram" (Bubble Diagram.cdt)	PRO
Concept Map	In ConceptDraw PRO, use the template "Concept Map" (Concept Map.cdt)	PRO

## Engineering

### Benefits

Helps to visualize industrial systems in electronics, electrical, chemical, process, and mechanical engineering. Draw electrical schema-tics; digital and analog logic, circuit and wiring schematics and diagrams; power systems diagrams; maintenance and repair diagrams for electronics and electrical engineering, the Block Flow, Process Flow, Piping & Instrumentation

Diagrams for chemical and process engineering, the Part and Assembly, Pneumatic and Hydraulic Systems Drawings for mechanical engineering.



### Objective

Visually communicate concepts, architecture and design of complex industrial engineering systems to simplify and accelerate the understanding, analysis and representation.

### Solution Purpose

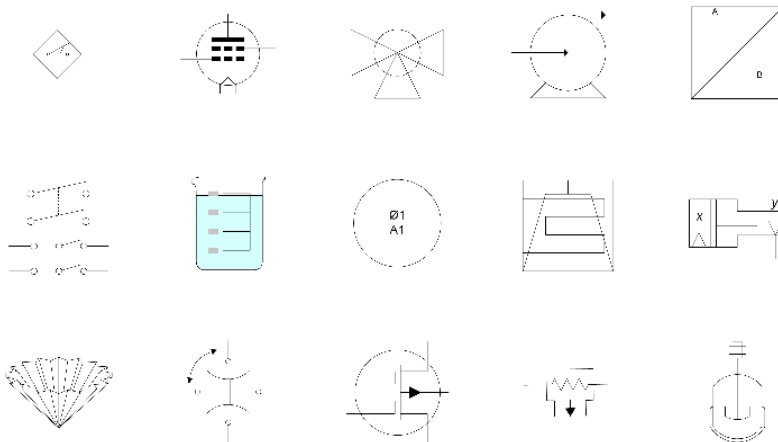
Draw the diagrams and drawings to visually present, analyze and report the production cycles, industrial processes and technological systems, industrial projects and R&D.

### Intended For

Industrial engineers, production managers, researchers and developers.

### Products and methods

ConceptDraw PRO is a powerful intelligent vector graphics engine that can be used for basic diagramming.



## Solution Reference: Engineering

### **Toolbox 1. Electronics and electrical engineering diagrams and schematics**

Draw electrical schematics and wiring diagrams; circuit diagrams, integrated circuit schematics, digital and analog logic designs; the diagrams of industrial power systems; the electrical schematics, maintenance and repair diagrams, and utilities infrastructure designs; the basic electrical schematics; the logic gate diagrams for documenting of engineering design of electronics and electrical systems.

Tasks	Actions	Products
Electrical schematic, on-line and wiring diagrams and blueprints	In ConceptDraw PRO, use the template "Basic Electrical" (Basic Electrical.cdt)	PRO
Annotated circuit diagrams, integrated circuit schematics, digital and analog logic designs	In ConceptDraw PRO, use the template "Circuits and Logic" (Circuits and Logic.cdt)	PRO
Annotated diagrams of industrial power systems	In ConceptDraw PRO, use the template "Industrial Control Systems" (Industrial Control Systems.cdt)	PRO
Annotated electrical schematics, maintenance and repair diagrams, and utilities infrastructure designs	In ConceptDraw PRO, use the template "Systems" (Systems.cdt)	PRO
Basic electrical schematics	In ConceptDraw PRO, use the template "Electrical Scheme" (Electrical Scheme.cdt)	PRO
Logic Gate diagrams	In ConceptDraw PRO, use the library "Logic Gate Diagram" (Logic Gate Diagram.cdl)	PRO

### **Toolbox 2. Chemical and process engineering diagrams**

Draw Block Flow Diagrams, Process Flow Diagrams, Piping and Instrumentation Diagrams for the documenting of engineering design of process control systems.

Tasks	Actions	Products
Block Flow Diagram	In ConceptDraw PRO, use the template "Blocks 2D" (Blocks 2D.cdt)	PRO
Process Flow Diagram	In ConceptDraw PRO, use the template "Industrial Equipment" (Industrial Equipment.cdt)	PRO
Piping and Instrumentation Diagram	In ConceptDraw PRO, use the template "Industrial Equipment" (Industrial Equipment.cdt)	PRO

### **Toolbox 3. Mechanical engineering drawings and schematics**

Draw mechanical engineering and technical drawings, diagrams, blueprints and schematics for the design of machine tools and mechanical devices, pneumatic and hydraulic systems, fluid power assemblies, flow control, flow path, valve and valve assemblies, and fluid power equipment.

Tasks	Actions	Products
Annotated mechanical engineering and technical drawings, diagrams, blueprints and schematics	In ConceptDraw PRO, use the template "Part and Assembly Drawing" (Part and Assembly Drawing.cdt)	PRO
Drawings of pneumatic and hydraulic systems, fluid power assemblies, flow control, flow path, valve and valve assemblies, and fluid power equipment	In ConceptDraw PRO, use the template "Pneumatic and Hydraulic" (Pneumatic and Hydraulic.cdt)	PRO

## Software Development

### Benefits

Helps to accelerate and simplify software development and design by allowing you to draw UML diagrams and prototype Windows and Mac OS user interfaces.



### Objective

Visually communicate the concepts, architecture and design of complex software and information systems to simplify and accelerate understanding, analysis, and representation.

### Solution Purpose

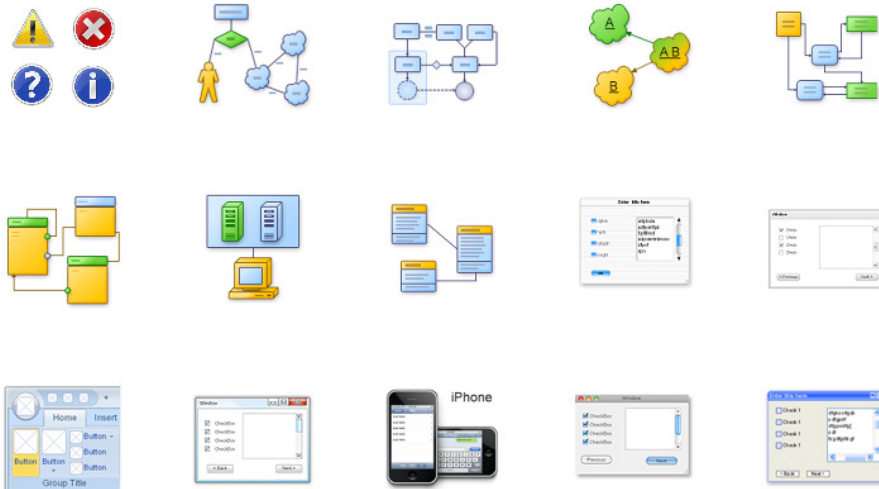
Easily draw diagrams and drawings to visually present, analyze and report on software and information systems architecture, data models and user interface design.

### Intended For

Software and system architects, software developers, CASE designers.

### Products and methods

ConceptDraw PRO is a powerful intelligent vector graphics engine that can be used for basic diagramming.



## Solution Reference: Software Development

### Toolbox 1. UML Diagrams

Draw UML diagrams for visualizing of software systems architecture and design.

Tasks	Actions	Products
UML Model Diagrams	In ConceptDraw PRO, use the template "UML Model Diagram" (UML Model Diagram.cdt)	PRO

### Toolbox 2. Sketch User Interface

Sketch drawings of Windows 7 UI and Mac OS X Snow Leopard UI for prototyping and designing of software applications user interface (UI).

Tasks	Actions	Products
Windows 7 sketch interface	In ConceptDraw PRO, use the template "Windows 7 User Interface" (Windows 7 User Interface.cdt)	PRO
Mac OS X Snow Leopard sketch interface	In ConceptDraw PRO, use the template "Mac OS X Snow Leopard User Interface" (Mac OS X Snow Leopard User Interface.cdt)	PRO

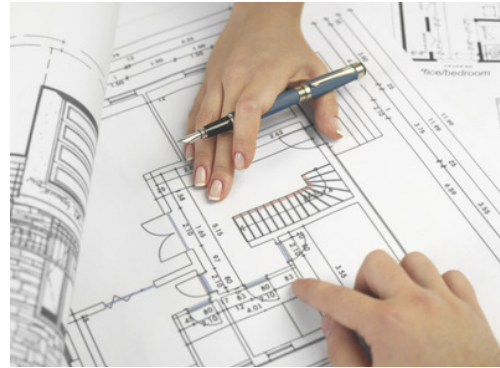


## Building Plans

### Benefits

Building plan tools help architects and building engineers.

With ConceptDraw PRO you have the ability to develop design proposals, communicate ideas and concepts that relate to a design, communicate requirements to a building contractor to facilitate building, record completed work, and make a record of what currently exists. With ConceptDraw PRO you can draw floor plans, site plans, plans of building services, fire and emergency plans, furniture and equipment layouts.



### Objective

Visually communicate the principles of the building design to simplify and accelerate the understanding, analysis, and representation.

and building engineering drawings: floor plans, site plans, plans of building services, fire and emergency plans, furniture and equipment layouts.

and anyone who need to visualize the design and layout of buildings, sites, offices, rooms, etc.

### Products and methods

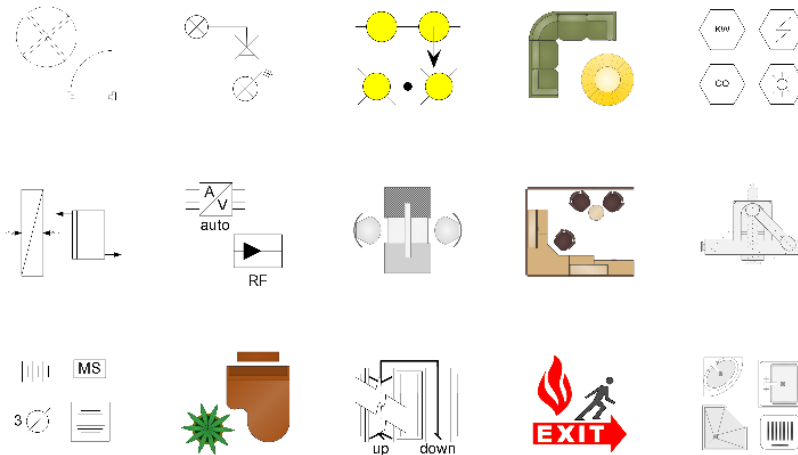
ConceptDraw PRO is a powerful intelligent vector graphics engine that can be used for building plans.

### Solution Purpose

Easily create the architectural

### Intended For

Intended for architects, building engineers



## Solution Reference: Building Plans

### Toolbox 1. Building Plans

Draw floor plans, site plans, plans of building services, fire and emergency plans, furniture and equipment layouts for the visualizing of building and site design and engineering services.

Tasks	Actions	Products
Cafe and Restaurant Plans	In ConceptDraw PRO, use the template "Cafe & Restaurant" (Cafe & Restaurant.cdt)	PRO
Electric and Telecom Plan	In ConceptDraw PRO, use the template "Electric and Telecom Plan" (Electric and Telecom Plan.cdt)	PRO
Expo and Shopping Mall Plans	In ConceptDraw PRO, use the template "Expo & Shopping Mall Plan" (Expo & Shopping Mall Plan.cdt)	PRO
Fire and Emergency Plan	In ConceptDraw PRO, use the template "Fire and Emergency Plan" (Fire and Emergency Plan.cdt)	PRO
Gym, Spa, Sport Field and Recreation Area Plans	In ConceptDraw PRO, use the template "Healthcare" (Healthcare.cdt)	PRO
Home Plan	In ConceptDraw PRO, use the template "Home Plan" (Home Plan.cdt)	PRO
HVAC Plan	In ConceptDraw PRO, use the template "HVAC Plan" (HVAC Plan.cdt)	PRO
Office Layout Plan	In ConceptDraw PRO, use the template "Office Layout" (Office Layout.cdt)	PRO

Tasks	Actions	Products
Plant Layout Plan	In ConceptDraw PRO, use the template "Plant Layout" (Plant Layout.cdt)	PRO
Plumbing & Piping Plan	In ConceptDraw PRO, use the template "Plumbing & Piping Plan" (Plumbing & Piping Plan.cdt)	PRO
Reflected Ceiling Plan	In ConceptDraw PRO, use the template "Reflected Ceiling Plan" (Reflected Ceiling Plan.cdt)	PRO
School and Training Plans	In ConceptDraw PRO, use the template "School and Training Plan" (School and Training.cdt)	PRO
Seating Plan	In ConceptDraw PRO, use the template "Seating Plan" (Seating Plan.cdt)	PRO
Security and Access Plan	In ConceptDraw PRO, use the template "Security and Access Plan" (Security and Access Plan.cdt)	PRO
Site Plan	In ConceptDraw PRO, use the template "Site Plan" (Site Plan.cdt)	PRO

## Maps

### Benefits

Draw continent, directional, road, and transit maps to represent international, business, and professional information visually. Reflect the geographic distribution of activity and resources, show the transportation and migration ways, navigate in the cities and towns, sites and areas, find route of travel by car or public transport.



### Objective

Visually communicate geographical, location, and route information to simplify and accelerate understanding and analysis of geospatial information, and orientation, navigation and routing.

### Solution Purpose

Draw geographic maps (cartograms, thematic maps, locator maps, flow maps) and directional, road and transit maps.

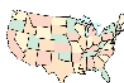
documents and presentations with easy-to-read maps.

### Products and methods

ConceptDraw PRO is a powerful intelligent vector graphics engine that can be used for basic map drawing.

### Intended For

Designers and people who need to illustrate



## Solution Reference: Maps

### Toolbox 1. Continent Maps

Draw continent maps and transform them into cartograms, thematic maps, locator maps, and flow maps for visualizing business, technical, and other information with geospatial context.

Tasks	Actions	Products
Africa Map	In ConceptDraw PRO, use the template "Geo Map — Africa" (Geo Map — Africa.cdt)	PRO
Asia Map	In ConceptDraw PRO, use the template "Geo Map — Asia" (Geo Map — Asia.cdt)	PRO
Australia Map	In ConceptDraw PRO, use the template "Geo Map — Australia" (Geo Map — Australia.cdt)	PRO
Europe Map	In ConceptDraw PRO, use the template "Geo Map — Europe" (Geo Map — Europe.cdt)	PRO
North America Map	In ConceptDraw PRO, use the template "Geo Map — N. America" (Geo Map — N. America.cdt)	PRO
South America Map	In ConceptDraw PRO, use the template "Geo Map — S. America" (Geo Map — S. America.cdt)	PRO

### **Toolbox 2. Directional, Road and Transit Map**

Draw directional, road, and transit maps for navigating cities, public transport systems, territories and sites.

Tasks	Actions	Products
3D Directional Map	In ConceptDraw PRO, use the template "Directional map — 3D" (Directional map — 3D.cdt)	PRO
Directional Map	In ConceptDraw PRO, use the template "Directional map" (Directional map.cdt)	PRO
Road and Transit Maps	In ConceptDraw PRO, use the template "Maps" (Maps.cdt)	PRO

## Education

### Benefits

Illustrate educational documents, presentations, and websites quickly and easily with the astronomy, chemistry, math and physics vector pictures and clip art.



### Objective

Visualize complex knowledge to simplify and accelerate learning and teaching.

### Solution Purpose

Illustrate lectures, textbooks, student reports and presentations,

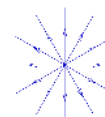
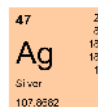
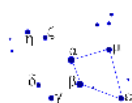
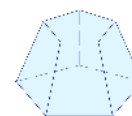
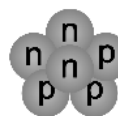
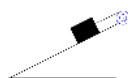
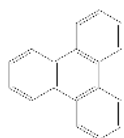
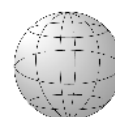
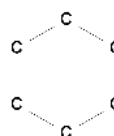
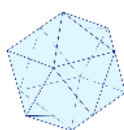
educational websites with impressive scalable color pictures and clip art.

### Intended For

Educators and students.

### Products and methods

ConceptDraw PRO is a powerful intelligent vector graphics engine that can be used for basic diagramming. ConceptDraw MINDMAP is a powerful tool to organize learning materials.



## Solution Reference: Education

### Toolbox 1. Educational Illustrations

Use educational pictures and clip art for the illustrating of lectures, textbooks, student reports and presentations, educational websites.

Tasks	Actions	Products
Astronomy Illustrations	In ConceptDraw PRO, use the libraries "Constellations" (Constellations.cdl), "Galaxies" (Galaxies.cdl), "Northern Constellations" (Northern Constellations.cdl), "Other Constellations" (Other Constellations.cdl), "Southern Constellations" (Southern Constellations.cdl), "Stars and Planets" (Stars and Planets.cdl), "Zodiac Constellations" (Zodiac Constellations.cdl)	PRO
Chemistry Illustrations	In ConceptDraw PRO, use the libraries "Aromatic" (Aromatic.cdl), "Chemical Basic" (Chemical Basic.cdl), "Chemical Elements" (Chemical Elements.cdl), "Chemical Engineering" (Chemical Engineering.cdl), "Conformations" (Conformations.cdl), "Laboratory Equipment" (Laboratory Equipment.cdl)	PRO
Math Illustrations	In ConceptDraw PRO, use the libraries "Greek letters" (Greek letters.cdl), "TrigFuncs" (TrigFuncs.cdl)	PRO



Tasks	Actions	Products
Physics Illustrations	In ConceptDraw PRO, use the libraries "Mechanics" (Mechanics.cdl), "Nuclear Physics" (Nuclear Physics.cdl), "Optics" (Optics.cdl)	PRO

### Toolbox 2. Sentence Diagrams

Draw sentence diagrams for the visual representing of natural-language sentence grammatical structure.

Tasks	Actions	Products
Sentence Diagram	In ConceptDraw PRO, use the library "Sentence Diagramming" (Sentence-Diagramming.cdl)	PRO

### Toolbox 3. Educational Mind Maps

Taking notes for exam preparation and preparing for a lecture. Mind maps can be used for the visualizing of knowledge.

Tasks	Actions	Products
Exam Preparation mind map	In ConceptDraw MINDMAP, use the Input, Exam Preparation	MM
Preparing for a lecture mind map	In ConceptDraw MINDMAP, use the Input, Preparing for a lecture	MM

## Illustration

### Benefits

Make professional-looking documents, presentations and websites illustrated with color, scalable vector clip art and shapes, regardless of drawing skills.



### Objective

Communicate information visually in documents, presentations, and websites to simplify and speed up exploration, understanding, and remembering.

### Solution Purpose

Illustrate and design documents, presentations and websites quickly and easily using

the categorized libraries of scalable, color vector clip art and drawing shapes.

### Intended For

Intended for business and technology professions, educators and students, or anyone who needs to illustrate and design documents, presentations and websites quickly and easily.

### Products and methods

ConceptDraw PRO is a powerful intelligent vector graphics engine that can be used for scalable, color vector clip art and shapes to illustrate documents, presentations and websites.



## Solution Reference: Illustration

### Toolbox 1. Vector Clip Art

Use categorized color scalable vector clip art for illustrating of documents, presentations and websites in business and personal projects.

Tasks	Actions	Products
Transport clipart	In ConceptDraw PRO, use the "Transport" library (Transport.cdl)	PRO
Audio, Media and Video clipart	In ConceptDraw PRO, use the libraries "Audio" (Audio .cdl), "Media signs" (Media signs.cdl), "Video" (Video.cdl)	PRO
Business and Finance clipart	In ConceptDraw PRO, use the libraries "Advertising" (Advertising.cdl), "Business" (Business.cdl), "Contacts & Collaboration" (Contacts & Collaboration.cdl), "Currency" (Currency.cdl), "Management" (Management.cdl), "Money" (Money.cdl), "Office" (Office.cdl), "Time" (Time.cdl)	PRO
Computers & Communications clipart	In ConceptDraw PRO, use the libraries "Computers" (Computers.cdl), "Control devices" (Control devices.cdl) and "Communications" (Communications.cdl)	PRO
Fun and Artwork clipart	In ConceptDraw PRO, use the libraries "Funny Animals" (Animals2.cdl), "Aquatic Fauna" (AquaticFauna.cdl), "Architecture" (Architecture.cdl), "Food" (Food.cdl), "Funny Transport" (Funny Transport.cdl), "Music" (Music.cdl)	PRO

Tasks	Actions	Products
Manufacturing & Maintenance clipart	In ConceptDraw PRO, use the libraries "Resources & Energy" (Resources & Energy.cdl), "Technology" (Technology.cdl), "Tools" (Tools.cdl)	PRO
Nature clipart	In ConceptDraw PRO, use the libraries "Animals" (Animals.cdl), "Geography" (Geography.cdl), "Weather" (Weather.cdl)	PRO
People clipart	In ConceptDraw PRO, use the libraries "People" (People.cdl) and "Professions" (Professions.cdl)	PRO
Arrows, Symbols, Flags, Emblems clipart	In ConceptDraw PRO, use the libraries "Arrows" (Arrows.cdl), "Flags" (Flags.cdl), "State Emblems" (State Emblems.cdl), "ABC" (ABC.cdl), "MindMap Symbols" (MindMap Symbols.cdl)	PRO

## Toolbox 2. Designing documents, presentations, and web pages

Use the supplied backgrounds, frames, borders, symbols, arrows, text blocks and callouts for designing documents, presentations and websites.

Tasks	Actions	Products
Backgrounds	In ConceptDraw PRO, use the "Backgrounds" library (Backgrounds.cdl)	PRO
Frames and borders	In ConceptDraw PRO, use the "Borders & Frames" library (Borders & Frames.cdl)	PRO

Tasks	Actions	Products
Presentation symbols	In ConceptDraw PRO, use the "Presentation Symbols" library (Presentation Symbols.cdl)	PRO
Arrows	In ConceptDraw PRO, use the "Arrows" library (Arrows.cdl)	PRO
Text blocks and callouts	In ConceptDraw PRO, use the libraries "Annotations" (Annotations.cdl), "Callouts" (Callouts.cdl) and "Title Blocks" (Title Blocks .cdl)	PRO

## Idea Communication

### Benefits

Everyone in company is using the same symbols on the maps.  
It saves time on communication and understanding.

---

### Objective

Quickly get clear understanding of the new ideas using Topic Types.

### Solution Purpose

The recognizable and clear to everyone maps are shared within organization.

### Intended For

Managers and knowledge workers who need to communicate ideas quick, clear, memorable and impressive.

### Products and methods

Topic Types "Idea", "Document" and "Decision" with easy recognizable icons.

## Solution Reference: Idea Communication

### **Toolbox 1. Idea Mind Mapping**

Use topic types "Decision", "Idea" and "Document" to make a map recognizable.

Tasks	Actions	Products
Mark out topics that require the decision making	In ConceptDraw MINDMAP, use topic type "Decision"	MM
Mark out topics, which contain ideas	In ConceptDraw MINDMAP, use default topic type "Idea"	MM
Attach documents to topics	In ConceptDraw MINDMAP, use topic type "Document"	MM