

CS Odessa

Getting Started with ConceptDraw MINDMAP v7 for Mac OS

CONTENTS

GETTING STARTED WITH ConceptDraw MINDMAP	3
CREATING MIND MAPS	4
ADDING DETAILS	5
TOPIC TYPES	6
PRESENTING YOUR MIND MAP	7
BRAINSTORM MODE	8
INPUTS & OUTPUTS	8
WORKING WITH OTHER APPLICATIONS.....	9
SOLUTION PARK	9
NO-CHARGE SUPPORT	9
CROSS-PLATFORM LICENSING	9
OS X LION SUPPORT	9
MULTI-DISPLAY SUPPORT	9
MULTI-LANGUAGE SPELLCHECK	9
ABOUT CS ODESSA	9
Technical Support/Sales Phone Numbers.....	9
FREQUENTLY ASKED QUESTIONS.....	10
TABLE OF FIGURES	11
INDEX	11
KEYBOARD SHORTCUTS	12

GETTING STARTED WITH ConceptDraw MINDMAP

Thank you for your interest in ConceptDraw® MINDMAP v7! Let's begin by installing the program on your system.

To install the product, and activate your trial license:

1. Navigate your web browser to www.ConceptDraw.com and click **Join Us**.



Figure 1: Creating a new account on ConceptDraw.com

2. Fill in the form with your information, and then click **Submit**.
3. Check your email for the message from support@ConceptDraw.com that contains your confirmation link. (Spam filters may catch this message. If you don't see the email within a few minutes, check your "Junk" or "Spam" folders.)
4. Follow the link to confirm your account, and then click **Proceed to installation**.
5. Click **Download All ConceptDraw Products or Solutions**.

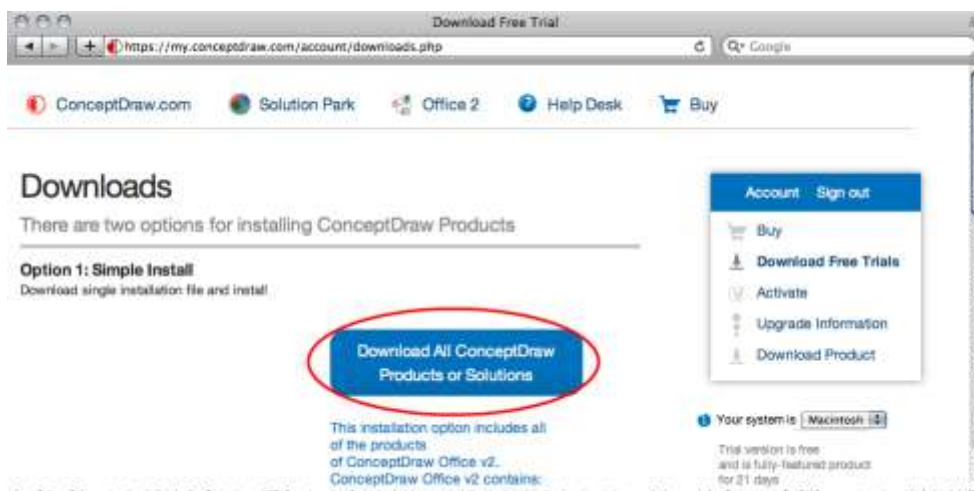


Figure 2: Downloading ConceptDraw Office Trial

6. Once the download is complete, run the installation file.
7. Follow **all** on-screen instructions to complete the installation.

- Once the program is installed and launched, you will be prompted to enter your ConceptDraw account information. Do so.
- Wait briefly for your account to be synchronized.
- Congratulations! Your FREE 21-day trial of ConceptDraw MINDMAP has begun.

CREATING MIND MAPS

Mind mapping is a method of organizing your thoughts visually that breaks the mold of old fashioned note taking. Mind mapping gets your thoughts onto the page organically, allowing ideas to stem from one another as they occur. The first step to creating a mind map is identifying its Main Idea. This central topic defines the map, creating a hub that subsequent Topics and Subtopics will all support. Think of it as the title of your map.



Figure 3: Labeling the Main Idea

Select the Main Idea tile with your mouse, and then type on your keyboard to label it. Press "Enter" when you're finished labeling, then press "Enter" again to create your first Topic.

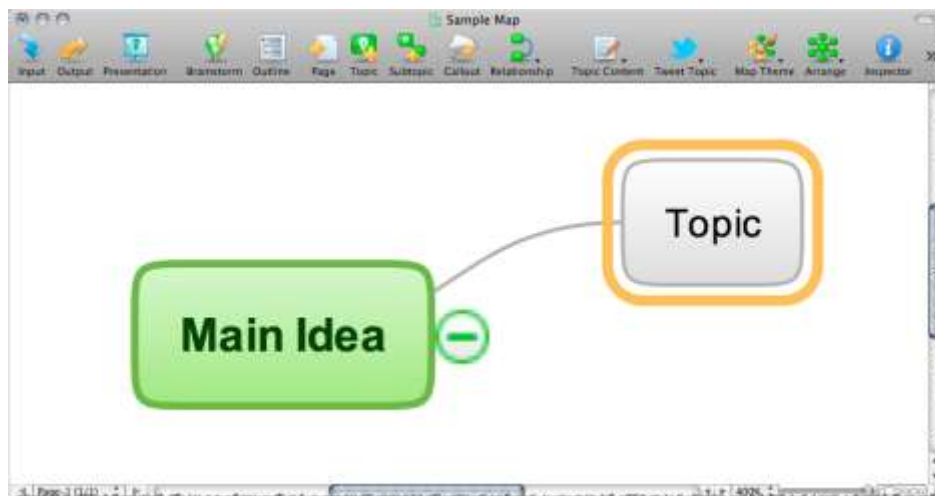


Figure 4: Labeling a Topic

To label a **Topic**, select it with your mouse, and then simply type on your keyboard. Press “Return” to create another topic at the same level. To close the topic without creating a new one, press “Enter”. To create a **Subtopic**, highlight a Topic and press “Insert.”

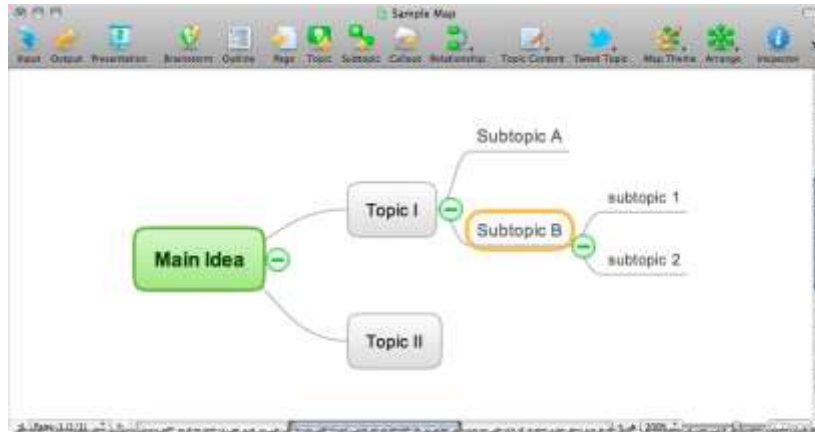


Figure 5: Labeling Subtopics

Reorganizing your map is as simple as selecting a topic with your mouse, and then dragging and dropping it to a new location. You can promote and demote topics easily—just drag-and-drop a topic onto another topic to automatically subordinate it. Selected topics can also be deleted entirely by pressing “Delete” on your keyboard, or cut, copied, and pasted with familiar keyboard shortcuts.

ADDING DETAILS

It’s best to keep your individual topics concise. Mind maps with long winded topics quickly become cluttered, confusing, and ineffective. That being the case, the most impressive features of ConceptDraw MINDMAP are those that let you add more information to your mind map without interfering with its readability.

You can add Notes can to a topic by selecting it with your mouse, and then clicking the **Topic Content** button on the toolbar. A Note Pane will appear in which you can type your Note, and a Note icon will then appear on the topic’s tile. Hover your mouse over the icon to view your Note’s text; otherwise, Notes are not displayed in the main view of your map. Click the Topic Content button on the toolbar again to toggle the Note Pane’s visibility.

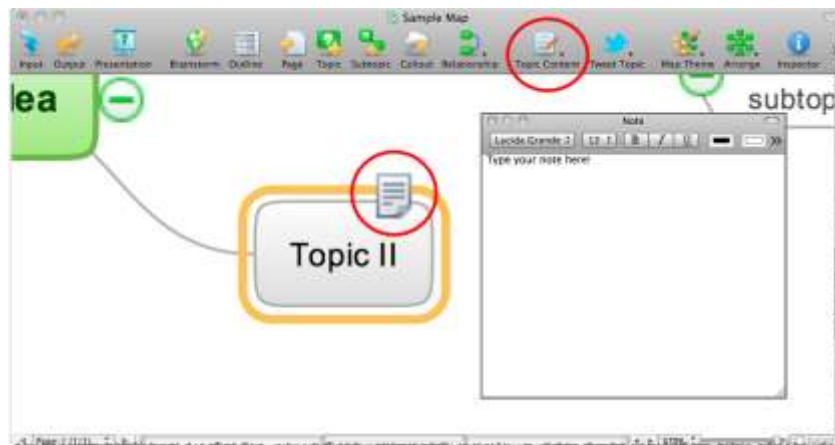


Figure 6: Adding Notes

You can provide visual shortcuts for navigating your map with Symbols and Clipart. To add Symbols to a topic, select it, and then click the **Inspector** button on the toolbar. The Inspector Pane will appear; on it, select the Symbols tab. From

there, you can add a variety of recognizable symbols to your topics for indicating the status of tasks, resources, and decisions. To add Clipart, select a topic, and then from the menu bar at the top of the screen select **Insert> Picture> From Clipart**.

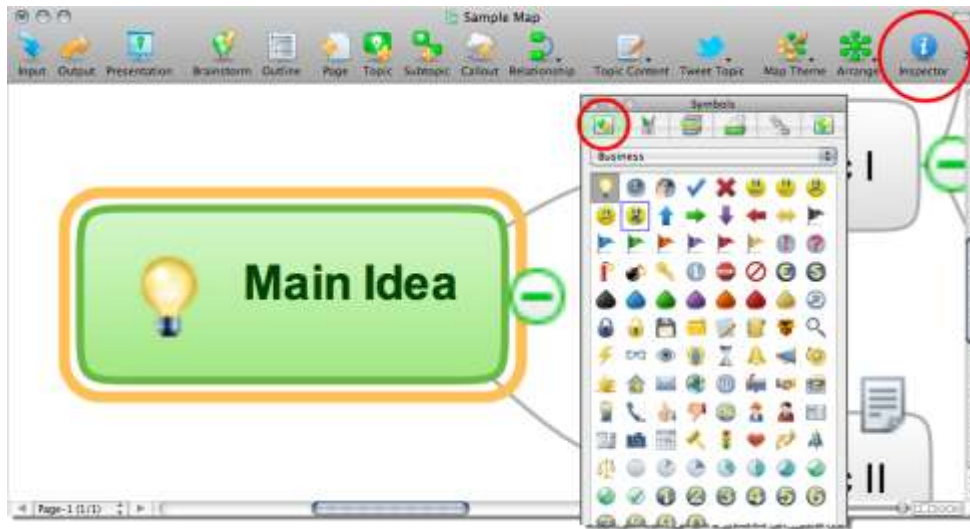


Figure 7: Adding Symbols

Hyperlinks can also be embedded in a mind map to make referencing outside information quick and easy. Select a topic, and then click the Hyperlink button on the toolbar, or select the Hyperlink tab on the Inspector pane. Then choose the kind of hyperlink you want and enter its location in the box provided. To follow the link, click "Open" in the Hyperlinks pane, or simply click the Hyperlink icon that appears on the topic's tile.

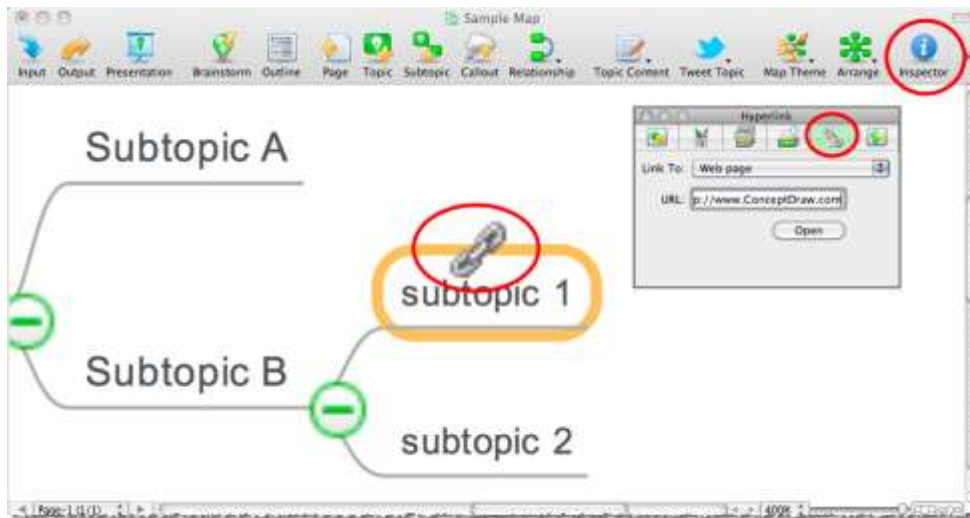


Figure 8: Adding Hyperlinks

TOPIC TYPES

Specifying Topic Types for your topics enables an even deeper level of functionality in ConceptDraw MINDMAP. Select a topic in your map and then click the **Inspector** button to open the Inspectors, and then select the **Topic Type** pane. Topic Types are grouped in three areas: Universal Diagramming (a catch-all category for a basic Topic Type functionality), Business Productivity (useful in process mapping and risk analysis), and Project Management. The Project Management area contains all the Topic Types necessary to integrate your mind map with ConceptDraw PROJECT, such as Task, Phase,

Resources, and Milestones. Once you have selected a Topic Type, you can edit the corresponding Topic Content. Click the **Topic Content** button on the toolbar (or select the tab on the Inspector pane) to view the Topic Data pane. Depending on the selected Topic Type, you have a variety of options such as attaching Documents, setting dates for Tasks, and identifying costs of Resources. By utilizing Topic Types, you can organize a vast amount of data in a single file that's easily deciphered.

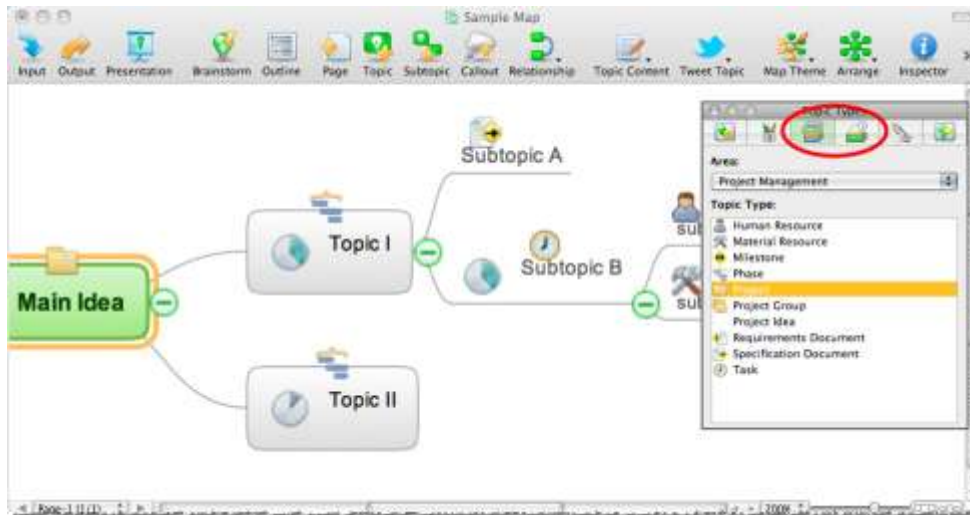


Figure 9: Topic Type Inspector

PRESENTING YOUR MIND MAP

With its built-in Presentation Mode, ConceptDraw MINDMAP makes generating presentations faster and easier than ever before. The **Presentation** menu houses all your presentation controls in a single, convenient location.

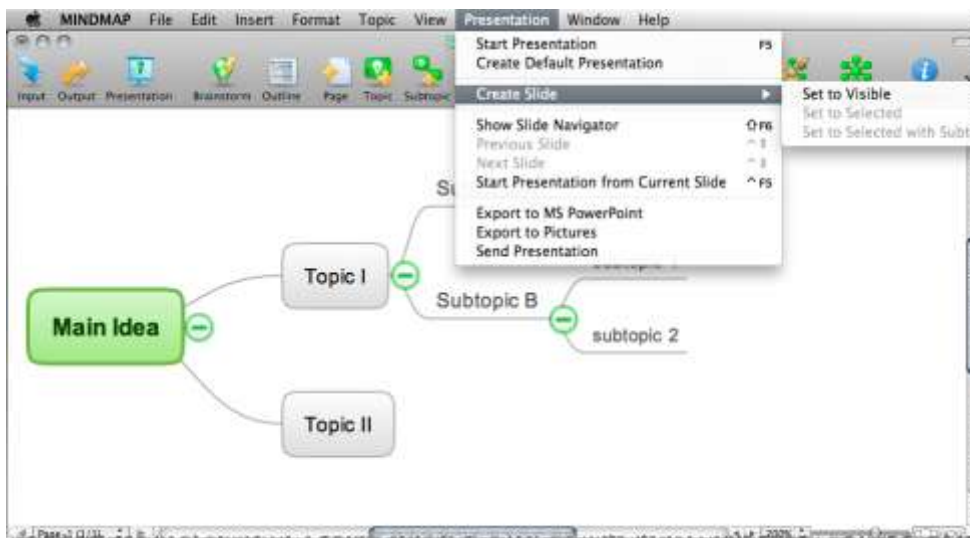


Figure 10: Presentation menu

To begin presenting with zero prep time, simply click **Start Presentation**. A basic slideshow highlighting each of your Main Topics will begin in full-screen Presentation Mode. Click the mouse to advance slides.

Create Default Presentation stores the default slideshow in the Slide Navigator without engaging Presentation Mode.

The **Create Slide** submenu houses controls for customizing your presentation. **Set to Visible** captures a slide of the area of your map currently in view. Using the **Zoom** controls on the View menu of the ribbon, you can focus on specific areas of your map, and quickly create slides of only the content you want.

Set to Selected captures a slide of the selected topic or topics. **Set to Selected with Subtopics** allows you to select a topic and capture a slide of it *and* its related subtopics with a single click.

Show Slide Navigator expands the Slide Navigator tray at the bottom of the window. In the Slide Navigator, you will see all the slides you have created. You can reorder them by dragging and dropping, or remove them by clicking the **X** in their upper-right corner. Clicking the large plus icon works just like **Set to Visible**. Clicking the play icon in the upper-left corner of a slide begins presentation mode from that slide.

Beyond its own presentation mode, ConceptDraw MINDMAP can also export to Microsoft® PowerPoint®. Selecting **Export to MS PowerPoint** opens a window with two options: Outline and Slideshow. **Outline** exports just the text of your map, allowing you to select from your available PowerPoint themes for the presentation. **Slideshow** exports the images saved in your Slide Navigator as the slides of a new MS PowerPoint presentation.

The **Export to Pictures** menu item saves the slides in your Slide Navigator as graphics files in a new folder. A variety of popular graphics formats are available when exporting your presentation.

Send Presentation opens a new message in your email client with your map's outline as the text, and attaches both your map file and a .png file exported from your map. The attached map file is saved in Presentation mode. When the recipient opens it, they will view the presentation you have created.

BRAINSTORM MODE

Brainstorming is a great way to begin a new map or to expand an existing map, allowing you to add a large amount of ideas and data to your map very quickly. To begin brainstorming, click the **Brainstorm** button on the toolbar.

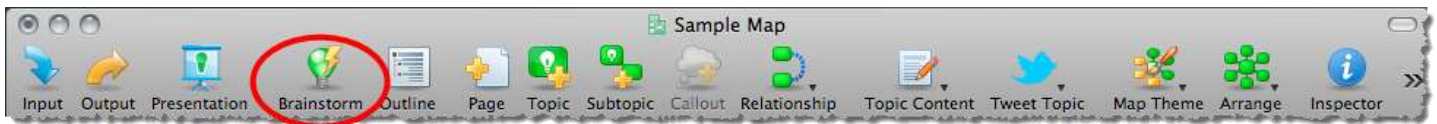


Figure 11: Brainstorm button

If this is a new map, first, name your main topic. If you want to set a time limit for your Brainstorming session, enter the amount of time desired, and then click **Start Timer**. When you are ready to begin brainstorming, click on the **Enter Ideas** field and begin typing out your brainstormed ideas. After you finish each idea, press Enter on your keyboard to add it to the map. Repeat until you are finished brainstorming. Don't worry about the structure of your list; you'll organize it after the Brainstorm. When you are finished brainstorming, just drag and drop your ideas to connect them to other topics.

INPUTS & OUTPUTS

Select **Input** from the **File menu** to view a variety of templates designed to inspire your creativity and help you get started with mind mapping. The left-most pane of the Inputs window displays a list of categories; the center, the various examples in a selected category; and the right, a detailed description of a selected example. The Output window (accessible via **File> Output**) is set up similarly, with categories on the left, examples in the center, and description on the right. Outputs included mind maps of only certain Topic Types, as well as opening mind maps with ConceptDraw PROJECT for more detailed resource management, drawing ORG charts and other diagrams from your mind map with

ConceptDraw PRO, and a variety of other ready-to-use documents. Outputs are a powerful way to get your thoughts off the page and into action.

WORKING WITH OTHER APPLICATIONS

ConceptDraw MINDMAP has the ability to export to a number of usable file formats, giving ConceptDraw users powerful flexibility in working with others. Expand the **File** menu to view all of ConceptDraw MINDMAP's import and export capabilities. Import options include OPML files, text outlines, Microsoft Project® native files (.mpp), and Mindjet® MindManager® files. Export options include MS Project and PowerPoint, as well as Adobe® PDF, HTML, and a variety of graphics formats.

SOLUTION PARK

ConceptDraw Solution Park is an ever-growing collection of business-specific solutions and product add-ons that are available to add continued value after the initial purchase of a ConceptDraw product. For more information, visit <http://www.conceptdraw.com/solutions.php>.

NO-CHARGE SUPPORT

CS Odessa offers no-charge support for all licensed and trial users of ConceptDraw Products. ConceptDraw Maintenance Assurance P1 is also available to stay current with major updates to ConceptDraw Products.

CROSS-PLATFORM LICENSING

CS Odessa is one of the only companies in the world that offers a cross-platform license. A single named user can install a purchased license on multiple systems, even with different operating platforms.

OS X LION SUPPORT

All ConceptDraw applications are compatible with Macintosh OS X Lion.

MULTI-DISPLAY SUPPORT

ConceptDraw MINDMAP v7 supports working across multiple computer screens. You can open separate mind maps on different screens and copy-and-paste from one to the other.

MULTI-LANGUAGE SPELLCHECK

ConceptDraw MINDMAP offers Spell Check in a variety of different languages.

ABOUT CS ODESSA

Founded in 1993, Computer Systems Odessa supplies cross-platform productivity tools and graphics technologies to professional and corporate users around the world. From their headquarters in Odessa, Ukraine, and offices in San Jose, CA, and Boston, MA, CS Odessa sells internationally in over 150 countries, both directly and through resellers. The ConceptDraw Productivity Line has won numerous awards, and is used by hundreds of thousands all over the world. For more information, visit <http://www.conceptdraw.com/>.

Technical Support/Sales Phone Numbers

US/Canada/Mexico:

Technical Support (Toll Free): +1 (877) 441-1150 x4 amersupport@csodessa.com

Sales (Toll Free): +1 (877) 441-1150 x3 amersales@csodessa.com

Europe:

+38 0487601963 support@conceptdraw.com sales@conceptdraw.com

FREQUENTLY ASKED QUESTIONS

What is the difference between Technical Support and Maintenance Assurance P1?

Technical support is a no charge item provided to our customers and individuals trialing or products. Our Tech Support team is there to help you with installing, product activation, and product issues. Technical support is available by submitting a ticket via our web site, and by phone and email. Minor product upgrades are at no additional cost.

When purchased at the same time of you ConceptDraw Product purchase, Maintenance Assurance P1 provides you the next major release of your product at no additional cost. When the next major upgrade of the product becomes available you will be notified of its availability for download and installation.

Why is ConceptDraw Solution Browser part of the product I purchased?

When you activate a purchased license for your product, that authorization is stored in the cloud, and then synchronized with your desktop product(s) using ConceptDraw Solution Browser. We do this so if the unthinkable occurs and you have a catastrophic event with your computer such as a hard disk failure, you can log into your account on ConceptDraw.com and retrieve your license, saving you time and headaches.

The ConceptDraw Solution Browser also manages the versioning of all of your products, and give you access to all of the additional business solutions found in the ConceptDraw Solution Park.

I am with a large organization; do you support other methods of installation besides the one I experienced from my trial?

We have additional methods of delivering product to the users in your organization. Please contact our sales or support team for details.

Do you have pricing for academia and nonprofits?

Yes, we have aggressive pricing for students, educators and employees of certified nonprofit organizations. Contact our sales team for pricing details.

TABLE OF FIGURES

Figure 1: Creating a new account on ConceptDraw.com	3
Figure 2: Downloading ConceptDraw Office Trial.....	3
Figure 3: Labeling the Main Idea.....	4
Figure 4: Labeling a Topic.....	4
Figure 5: Labeling Subtopics	5
Figure 6: Adding Notes.....	5
Figure 7: Adding Symbols.....	6
Figure 8: Adding Hyperlinks	6
Figure 9: Topic Type Inspector	7
Figure 10: Presentation menu	7
Figure 11: Brainstorm button	8

INDEX

attaching documents	5	Note icon	4
Brainstorm	6	Notes.....	4
Clipart.....	5	OPML	7
confirm your account.....	3	OS X Lion.....	7
confirmation link.....	3	Output.....	6
Create Default Presentation	5	Presentation menu	5
Create Slide	5	presentations.....	5
cross-platform license.....	7	promote topic.....	4
Delete.....	4	Reorganizing	4
demote topic.....	4	Send Presentation	6
export.....	7	Set to Selected	6
File menu.....	7	Set to Selected with Subtopics	6
first step	4	Set to Visible	5
HTML	7	Slide Navigator.....	6
Hyperlink tab.....	5	Solution Park.....	7
Hyperlinks	5	Spell Check.....	7
import	7	Start Presentation.....	5
Input.....	6	Subtopic	4
Inspector button	5	Symbols.....	5
Inspector Pane	5	Symbols tab	5
install.....	3	synchronize.....	4
Main Idea	4	Technical Support/Sales Phone Numbers	7
Maintenance Assurance.....	7	Topic	4
Mindjet MindManager files	7	Topic Types	5
MS PowerPoint	6	Zoom controls.....	5
MS Project files	7		

KEYBOARD SHORTCUTS

Following is an abbreviated list of the most commonly used keyboard shortcuts. See the in-program Help file for the comprehensive list.

Keystroke	Function
Cmd + "?"	Help menu
Cmd + S	Save the active document
Cmd + O	Open a Document
Cmd + N	Create a New Document
Cmd + P	Print the active map
Cmd+A	Select all the objects on page
Cmd + Z	Undo the last operation
Cmd + X	Cut the selection to the Clipboard
Cmd + C	Copy the selection to the Clipboard
Cmd + V	Paste the content from the Clipboard
Cmd + Right	Indent topic (one level deeper)
Cmd + Left	Outdent topic (one level closer to the root)
Cmd + Down	Move topic one line down
Cmd + Up	Move topic one line up
Cmd + Opt + B	Hold Brainstorming session in current document
F5	Start Presentation Mode